

N.W 1/4 OF N.E. 1/4 OF  
SECTION 34, T.7N., R.1W., S.L.B.&M.

84

TAXING UNIT: 03,10

IN NORTH OGDEN CITY

PREFIX: 17-084

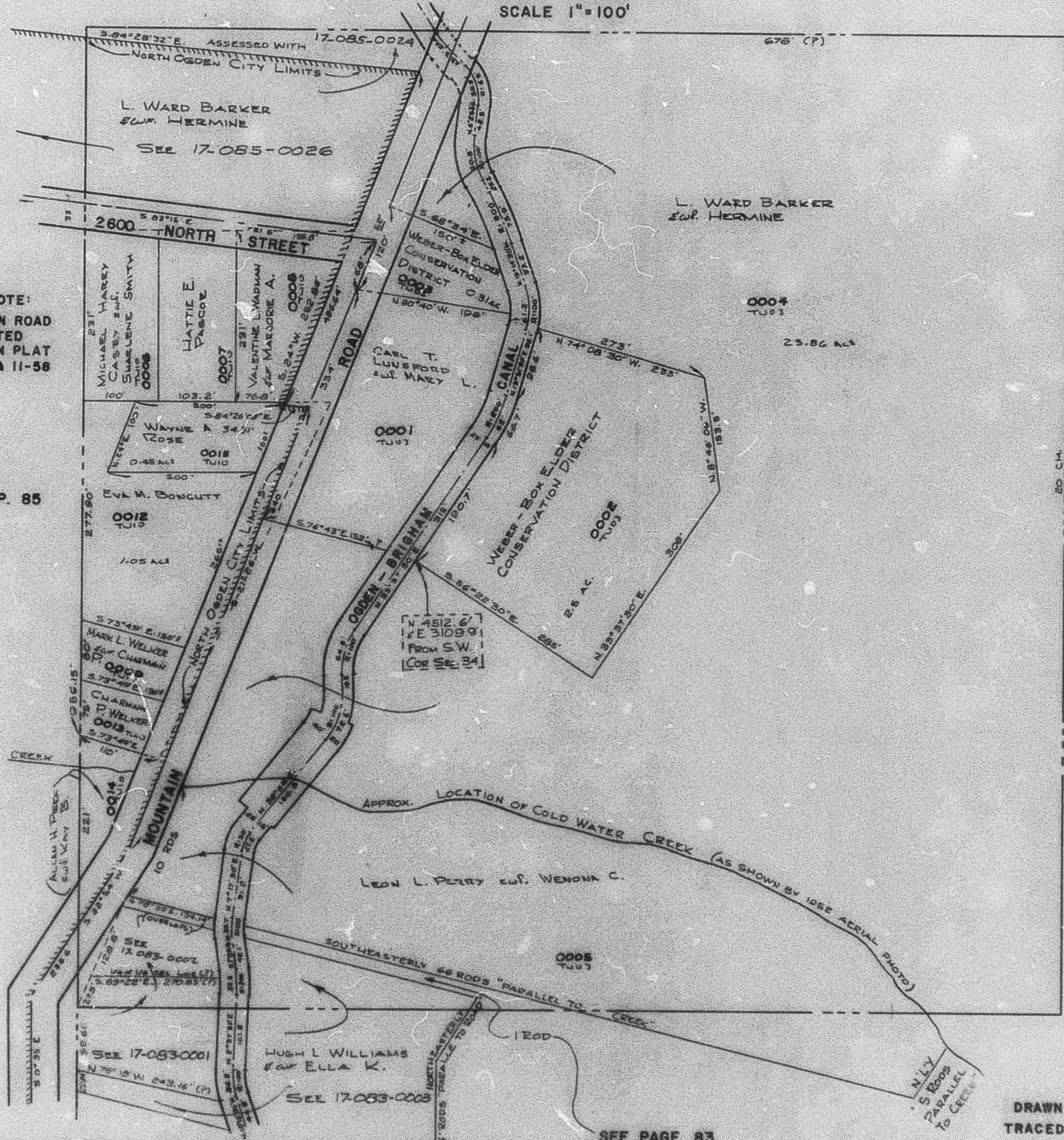
SCALE 1"=100'

NOTE:  
MOUNTAIN ROAD  
AS PLATTED  
BASED ON PLAT  
10-74 & 11-58

SEE P. 85

SEE P. 82-1

NOTE:  
OGDEN-BRIGHAM CANAL AS PLATTED BASED ON  
BUREAU OF RECLAMATION PLATS & SUCH DEEDS  
AS THERE ARE OF RECORD.



17

SEE PAGE 83

DRAWN BY: R.G.S. 4-58  
TRACED BY: W.F.J. 12-59